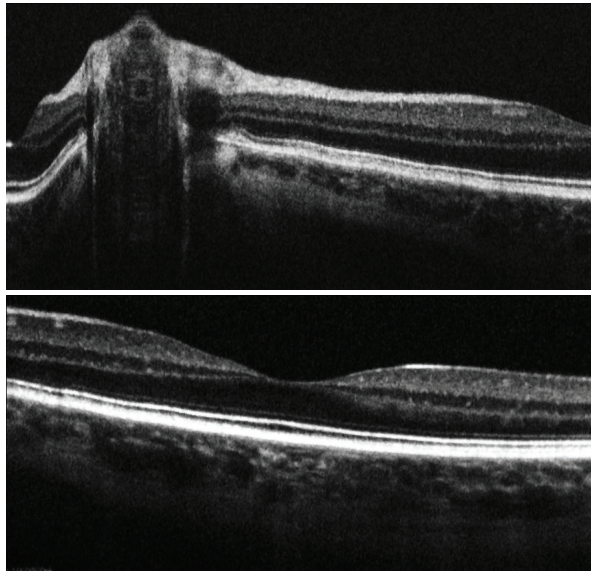




Cobra 1050 OCT Spectrometer Series

Balance resolution & depth for maximum versatility



The Cobra 1050 facilitates detailed imaging of the optic nerve head, thick nerve fiber layer, large blood vessels, and deep choroidal structures.

MAXIMIZE VERSATILITY

Premier optical design with superior SNR & subpixel resolution for greater image clarity

Superior sensitivity roll-off for 1050 nm:
<6 dB @ 2.0 mm imaging depth

Adjustable scan rate, up to 147 kHz

Proprietary VPH gratings for low polarization dependence & highest efficiency

Phase-stable imaging for vasculature;
deep imaging of retinal structures

OEM ready: robust, compact & athermal

The Cobra 1050 delivers high resolution SD-OCT imaging with surprising speed and roll-off.

We've reinvigorated this versatile imaging wavelength, adapting our proprietary high throughput design to the most cost-effective, high-performance camera available to deliver clear, detailed images at high retinal scan speeds. Ideal for choroidal imaging, the Cobra 1050 provides sufficient resolution to also study the anterior segment and other structures with a single system. It offers the speed and phase stability needed to image vascularization of the choroid for research or guided photocoagulation therapy, and the flexibility to reduce scan speed for optimum sensitivity.

CHOROIDAL IMAGING | RETINAL VASCULATURE
GUIDED PHOTOCOAGULATION THERAPY

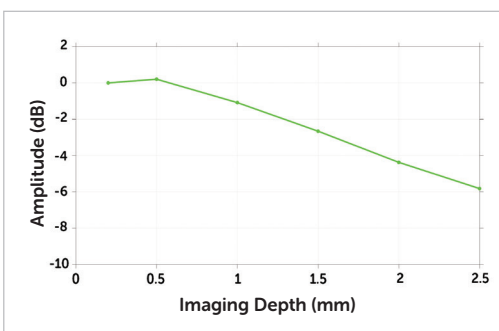


Achieve optimal balance between resolution & depth.

Wasatch Photonics' low roll-off, high speed Cobra 1050 allows you to image diverse structures in scattering media – penetrating deeper than 800 nm, and at better resolution than 1300 nm. From cornea to choroid, we'll help you reveal the eye's mysteries.

Specifications for our standard models can be found in the table below. Please contact us to discuss your custom OEM requirements. Note: Cobra 1050 part numbers are of the format C1050-[CWL]/[BW]-[kHz]-[camera][pixels], where the Sensors Unlimited GL2048 camera is represented by "SG", and 2K denotes 2048 pixels.

	C1050-1055/110-76-SG2K	C1050-1055/110-147-SG2K
Imaging Depth	5.0 mm	
Wavelength Range	1000 - 1110 nm	
Bandwidth	110 nm	
Spectral Resolution	0.05 nm	
Max Line Rate	76 kHz	147 kHz
Pixels	2048	
Interface	Camera Link	
Dimensions	9.5 x 19 x 6 cm	
Weight	1.4 kg	



While most InGaAs-based OCT spectrometers do poorly on roll-off and cost, the Cobra 1050 offers impressively low roll-off and high value for OEMs.

OEM CUSTOMIZATION

At Wasatch Photonics, we go beyond custom to create unique, bespoke spectrometers for our OEMs. We'll share our deep understanding of spectrometer and OCT system design, working with you as a collaborator to create products to differentiate you in your marketplace. From custom cameras, gratings, and athermal lens sets to drop-in replacements for legacy designs, we can develop a solution optimized for your imaging needs.

Contact us for greater clarity

